

# NAS PENSACOLA TRAIL GUIDE

## NASP SEAWALL HISTORICAL TRAIL

**DISTANCE:** 1.0 MILE EACH WAY  
**HABITAT:** COASTAL  
**TERRAIN:** PAVED SIDEWALK  
**DIFFICULTY:** EASY  
**PARKING:** MUSTIN BEACH CLUB/NEAR POOL



This handicap accessible trail is a leisurely 1.0 mile stroll along Naval Air Station Pensacola's seawall which borders the beautiful Pensacola Bay. Across the bay on the eastern side of Pensacola Pass, Fort Pickens, one of Pensacola's historical installations can be seen. Fishing is permitted in a few places along the trail.

## RADFORD CHIP TRAIL LOOP

**DISTANCE:** 0.5 MILE LOOP  
**HABITAT:** NATURAL  
**TERRAIN:** CHIP TRAIL  
**DIFFICULTY:** EASY  
**PARKING:** MUSTIN BEACH CLUB



Easy half mile loop adjacent to the paved Radford Fitness Trail.

## RADFORD FITNESS TRAIL

**DISTANCE:** 3.96 MILES EACH WAY  
**HABITAT:** COASTAL  
**TERRAIN:** PAVED  
**DIFFICULTY:** EASY  
**PARKING:** MUSTIN BEACH CLUB



Great for walking, running and cycling. Some of the most picturesque views of Pensacola Bay can be seen from this trail.

## AVIATION FITNESS TRAIL

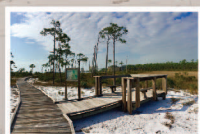
**DISTANCE:** 0.5 MILE LOOP  
**HABITAT:** URBAN/NEIGHBORHOOD  
**TERRAIN:** CHIP  
**DIFFICULTY:** EASY  
**PARKING:** FISHER AVE & SAUFLEY ST



Easy half mile loop close to neighborhoods and the NASP track.

## TROUT POINT TRAIL

**DISTANCE:** 0.5 MILE EACH WAY  
**HABITAT:** COASTAL WETLANDS  
**TERRAIN:** BOARDWALK  
**DIFFICULTY:** EASY  
**PARKING:** FUEL FARM RD



The Trout Point Trail, part of the Great Florida Birding Trail, is a handicap accessible boardwalk trail overlooking the wetland marsh, white sands and coastal scrub of Big Lagoon. Open on a reservation basis depending on accommodation by base Natural Resources and installation Security. Contact 850-452-3131 ext 3003 for details.

## BLUE ANGEL PARK TRAILS

### BLUE ANGEL PARK TRAIL

**DISTANCE:** 1.3 MILE LOOP  
**HABITAT:** PINE/OAK/PALMETTO FOREST  
**TERRAIN:** NATURAL PATH  
**DIFFICULTY:** EASY  
**PARKING:** MARINA



The Blue Angel Park Trail is an easy 1.3 mile loop, starting and ending at the park's wooded amphitheater. Hikers will enjoy a flat, natural terrain meandering through pine, oak and palmetto forests.

### BACKROAD TRAILS

**DISTANCE:** 0.1 - 1.4 MILE TRAILS  
**HABITAT:** PINE FORESTS  
**TERRAIN:** UNPAVED ROADS  
**DIFFICULTY:** EASY  
**PARKING:** MARINA



The Backroad Trails meander through vast and beautiful pine forests located at Blue Angel Park. The Backroad Trails are a simple network of dirt roads that were cut through the woods during the time when the historic Bronson Field training base was established in 1942. Biking is permitted.

Blue Angel Park  
 2100 Bronson Rd  
 Pensacola, FL 32506  
 (850) 390-6133 or (850) 281-5489

## DISC GOLF

Disc golf is a combination of Frisbee and Golf. Players throw the disc toward the basket. Players throw the disc where the previous disc has landed until every player's disc lands in the basket. The lowest throw count at the end of the game is the winner!

### Radford Disc Golf Course

**Open Mon - Sat**  
 Rental discs are available at Radford Fitness Center.  
 Course behind the Fitness Center  
 450 Radford Blvd. Pensacola, FL 32508  
 For more info call (850) 452-9845

9 Holes  
 Beginner Course

### Blue Angel Park Disc Golf Courses

**Open Thurs - Mon**  
 Rental discs are available at Blue Angel Park Outpost Marina.  
 2100 Bronson Rd. Pensacola, FL 32506  
 For more info call (850) 281-5489

Palmetto Course  
 18 Holes  
 Amateur Course

Pines Course  
 18 Holes  
 Intermediate Course

Oaks Course  
 18 Holes  
 Intermediate Course

### Corry Station Disc Golf Course

**Open 7 Days/Week**  
 Rental discs are available at Wenzel Fitness Center or Corry Liberty Center.  
 Course behind the Fitness Center  
 3711 Chief's Way, Pensacola FL 32507  
 For more info call (850) 452-6198

9 Holes  
 Beginner Course

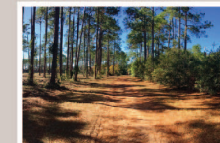
NAVYMWRPENSACOLA.COM



## CORRY STATION TRAIL

### CORRY STATION FITNESS TRAIL

**DISTANCE:** 4 MILE LOOP  
**HABITAT:** GRASS/TREES  
**TERRAIN:** SANDY/PAVED  
**DIFFICULTY:** EASY  
**PARKING:** WENZEL FITNESS CENTER



A combination of sandy trail and paved sidewalk that runs around the perimeter of Corry Station, with exercise stations scattered along the path. Along the sidewalk, near roads where the trail route becomes ambiguous, a very thick yellow line leads the way to the next off road section of the trail. Parking available behind Wenzel Fitness Center.

Wenzel Fitness Center  
 3711 Chief's Way  
 Pensacola, FL 32507  
 (850) 452-6198

## STAY CONNECTED



Proud to serve those who Serve

Follow us on FACEBOOK:



WE WANT YOUR FEEDBACK  
 PLEASE TAKE OUR SHORT SURVEY  
 www.navymwrpensacola.com

DOWNLOAD our app:  
 "Navy MWR Pensacola"



## SKI BEACH RECREATION AREA

JOHN TOWERS ROAD, BLDG. 3487  
 PENSACOLA, FL 32508

SPRING, FALL & WINTER  
 THURS. - MON.

SUMMER  
 7 DAYS A WEEK

\*Hours of operation are seasonal, please call 850-281-0134 for more information.

www.NAVYMWRPENSACOLA.COM



# SKI BEACH COMMUNITY RECREATION AREA

JOHN TOWERS ROAD, BLDG. 3487  
 PENSACOLA, FL 32508

SPRING, FALL & WINTER  
 THURS. - MON.

SUMMER  
 7 DAYS A WEEK

\*Hours of operation are seasonal, please call 850-281-0134 for more information.



Proud to serve those who Serve

WE WANT YOUR FEEDBACK • PLEASE TAKE OUR SHORT SURVEY  
 WWW.NAVYMWRPENSACOLA.COM

DOWNLOAD our App



FOLLOW US



MWR PENSACOLA

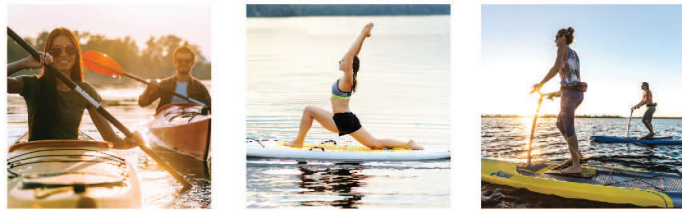


www.NAVYMWRPENSACOLA.COM

# RECREATION

## WATER SPORTS

Kayaks-Single.....AD/RET/RES/VET	HOURLY \$7	DAILY \$40
Kayaks-Single.....DOD	HOURLY \$8	DAILY \$45
Kayaks-Double.....AD/RET/RES/VET	HOURLY \$7	DAILY \$40
Kayaks-Double.....DOD	HOURLY \$8	DAILY \$45
Kayaks-Fishing.....AD/RET/RES/VET	HOURLY \$7	DAILY \$40
Kayaks-Fishing.....DOD	HOURLY \$8	DAILY \$45
Paddle boards.....AD/RET/RES/VET	HOURLY \$7	DAILY \$40
Paddle boards.....DOD	HOURLY \$8	DAILY \$45
Hobbie Cat Pedal board		
AD/RET/RES/VET	HOURLY \$8	DAILY \$45
DOD	HOURLY \$8	DAILY \$45
Snorkeling Set.....	DAILY \$7	
Surf boards.....	DAILY \$20	



## FRESHWATER FISHING EQUIPMENT

Fishing Rod.....	DAILY \$10
Tackle Box.....	DAILY \$6

## SALTWATER FISHING EQUIPMENT

Surf Rod.....	DAILY \$10
Tackle Box.....	DAILY \$6

## BICYCLES

Mountain Bike w/ Helmet.....	HOURLY \$7	DAILY \$35
Extra Helmet.....	DAILY \$2	

## PARTY RENTALS

10' X 10' Pop up tent.....	DAILY \$15
10' X 10' Heavy Duty Pop up tent.....	DAILY \$25
100 quart Cooler.....	DAILY \$7
48 quart Cooler.....	DAILY \$5
Water Jug.....	DAILY \$3
8' x 30" Aluminum Table.....	DAILY \$5
Small Table.....	DAILY \$5
Aluminum Folding Chair.....	DAILY \$1
White Wedding Chair.....	DAILY \$2
Popcorn Machine.....	DAILY \$15
Small Bounce House 13'L x 14" W.....	DAILY \$75
Combo Bounce House.....	DAILY \$100
Snow Cone Machine.....	DAILY \$15

## MISCELLANEOUS

Party Package.....	DAILY \$50
RIGID 25' 10-12 Guage extension cords.....	DAILY \$5
Vehicle Kayak/PB Carrier.....	DAILY \$5
Extra Life Jacket.....	DAILY \$10
Extra Paddle.....	DAILY \$1
Beach Umbrella.....	DAILY \$3
Beach Chair.....	DAILY \$5
Ice.....	\$1.25/bag

## CAMPING EQUIPMENT

3 Man Tent.....	DAILY \$7
4 Man Tent.....	DAILY \$9
6 Man Tent.....	DAILY \$10
Backpack Kit.....	DAILY \$15
Camp Chair.....	DAILY \$3
Camp Stool.....	DAILY \$2
Collapsible Water Jug.....	DAILY \$1
Cook Set.....	DAILY \$3
Cooking Utensils 3 piece set.....	DAILY \$3
Cot-Medium/Folding.....	DAILY \$4
Enamel Plate, Bowl, Mug.....	DAILY \$1
Fire Starter.....	DAILY \$1
Flashlight batteries not provided.....	DAILY \$1
Folding Table medium.....	DAILY \$4
Hammock with straps 3.....	DAILY \$6
Lantern batteries not provided.....	DAILY \$2
Large Shovel.....	DAILY \$1
LED Tent Light batteries not provided.....	DAILY \$1
Headlamp batteries not provided.....	DAILY \$2
Mummy Sleeping Bag.....	DAILY \$4
Percolator.....	DAILY \$2
Sleeping Bag.....	DAILY \$4
Sleeping Pad.....	DAILY \$3
Camping Stove.....	DAILY \$6



# GAMES

## OUTDOOR YARD GAMES

Cornhole Sets.....	DAILY \$5
*Football.....	DAILY \$2
*Frisbee.....	DAILY \$1
Giant Jenga Game.....	DAILY \$5
*Horseshoe Sets.....	DAILY \$5
Ladderball Game.....	DAILY \$5
*Volleyball.....	DAILY \$2
Washers Game.....	DAILY \$5
Badminton Set.....	DAILY \$5
Soccer Goal.....	DAILY \$5
*Soccer Ball.....	DAILY \$2
Spike Ball.....	DAILY \$5
Yard Dominos.....	DAILY \$5
Multi Game Box 8 games.....	DAILY \$25

\*FREE when games are used at Ski Beach Recreation Area

**All on-site rentals are due back 30 minutes prior to closing.**



Rental prices effective May 1, 2022

# RESALE

## SNACKS & PARTY SUPPLIES

Water/Soda/Juice/Sports Drinks.....	DAILY \$2.00
Popcorn Kit.....	DAILY \$1.75
25 Popcorn Bags.....	DAILY \$3.25
Freezer Pops.....	DAILY \$0.50
Ice Cream & Popsicles.....	DAILY \$2.00



WE WANT YOUR FEEDBACK • PLEASE TAKE OUR SHORT SURVEY  
[WWW.NAVYMWRPENSACOLA.COM/ONLINE-SURVEY](http://WWW.NAVYMWRPENSACOLA.COM/ONLINE-SURVEY)

SCAN THE QR CODE



DOWNLOAD our App



FOLLOW US



MWR PENSACOLA

[WWW.NAVYMWRPENSACOLA.COM](http://WWW.NAVYMWRPENSACOLA.COM)